



Miss Shaw's Newsletter

Dear children and families,

Here we are at the end of week 3 of the Spring Term. I am amazed by what everyone is achieving whether they are at home or here at school.

There is still no information about when we will all be able to be back together at school. I suspect that I will hear at the same time as you do as it will most likely come directly from the Government.

We have had some queries about why we are not using the voucher scheme for those children who are entitled to a free school meal but are currently at home. This is purely because the Government, and Local Authority, have been clear that we should use our catering company unless there is a very good reason not to. Such reasons would include not being able to maintain a Covid safe environment when the food parcels were being collected or the catering staff had been furloughed. So, for the foreseeable future Lunchtime Company will continue to provide food parcels for those children. Each child has a bag of food each per week to their lunches from.

As part of the road to leaving lockdown and reopening our schools, from Monday 25th January 2021, all staff at our school will have the opportunity to take a rapid Covid 19 test twice a week. You will have heard about this in relation to secondary schools late last year. The difference for us is that **ONLY** staff are being tested and not children. This is because the transmission rates between adults is far more significant. If a member of staff does test positive then I would carry out any track and trace duties with Public Health England's support. It is worth noting though, that if a member of staff does get a positive result from one of these rapid tests (Lateral Flow Tests) then they still have to book a further test at one of the test centres. This is called a PCR test. If the staff member gets a negative result from the PCR test then they would return to work and, if a bubble had been closed, those children could also return to school.

If you are feeling anything like me, I am sure that you are hoping that the vaccination programme continues to roll out quickly and that we can all return to some sort of "normality" in the very near future.

For those at home, please be reassured that we appreciate how much you are doing. We have strict expectations from the Government around how much home learning we must put online— 3 hours for EYFS and Key Stage 1 and 4 hours for Key Stage 2. Just to reassure any of you who are feeling a little overwhelmed, please just do what you can each day. Please get in touch with us if there is anything we can do to try and support – we are still here.

We would also love to see anything else that you might be getting up to during the days. Please send in photos through the class email accounts.

I have been cheered immensely by popping round to classrooms and standing at the door to see what is happening here in school. To then look at all the learning that has been posted through TEAMS and Seesaw was even more heartening. Please be assured that we are missing have our whole community here.

Stay safe,

Miss Shaw

A note from Mr Cumberland about Remote Learning

We have had a positive uptake and response to remote learning in such a short space of time, so thank you ever so much for all your endeavours in accessing the brand-new world of online learning!

Although a PC, laptop or tablet are the preferred methods to access remote learning, there are other means to getting onto Microsoft Teams. If you own an Xbox, a Playstation 4 or a Smart TV, these have a web browser installed and can also be used.

I have created a small tutorial to using these devices that may prove useful. To work most effectively, you do need a wired USB keyboard or a Bluetooth wireless dongle that you can plug into the device. Sadly, I found that computer mice do not work but I found using a controller or a remote control to be a reasonable substitute!

You can watch the tutorial at <https://tinyurl.com/Grove-Teams-Tut> If you are still having problems with remote learning, then please contact the office for further guidance.



Miss Shaw's Newsletter

School Dinner Menus until half term

There have been some changes to the school lunch menus for the next few weeks. Please see below the revised menus:

Week commencing:	Monday	Tuesday	Wednesday	Thursday	Friday
25th January	Pepperoni pizza and cheese wedges	Sausage and mash	Chicken goujons, wedges, sweetcorn	Roast chicken, potatoes, carrots, gravy	Fish, chips, beans
	Cheese pizza and wedges	Jacket potato, beans and cheese	Macaroni cheese, sweetcorn	Quorn sausage, potatoes, carrots	Quorn, chips, beans
	Chocolate brownie	Flapjack	Orange cake	Shortbread	Jelly
1st February	Pepperoni pizza, wedges, beans	Spaghetti Bolognese, pasta, peas	Tomato pasta, sweetcorn	Roast chicken, potatoes, carrots, gravy	Fish, chips, peas
	Cheese pizza, wedges, beans	Vegetable spaghetti Bolognese, pasta, peas		Quorn sausage, potatoes, carrots	Macaroni cheese, peas
	Chocolate cookie	Rice Krispie cake	Shortbread	Orange / banana cake	Flapjack
8th February	Jacket potatoes, cheese and beans	Macaroni cheese, sweetcorn	Cheese pizza, chips, beans	Roast chicken, potatoes, carrots, gravy	Fish, chips, beans
				Quorn sausage, potatoes, carrots, gravy	Vegetable nuggets, chips, beans
	Chocolate cake	Lemon muffin	Jelly	Sponge cake	Vanilla cookie



Miss Shaw's Newsletter



Friday 15th January 2021

Rosettes this week have been presented to (if you are at home, yours will come in the post soon!):

Kestrel: Alicia, Louie

Eagle: Lee, Edmund

Kingfisher: Joe, Raaida

Woodpecker: Kyra, Harry

Kiwi: Calan, Charlie C

Ostrich: Elena, Charlie

Flamingo: Dylan, Anastasia

Wren: Maya, Deanna

Gosling: Meg, Rosie

Duckling: Finley, Enrikas

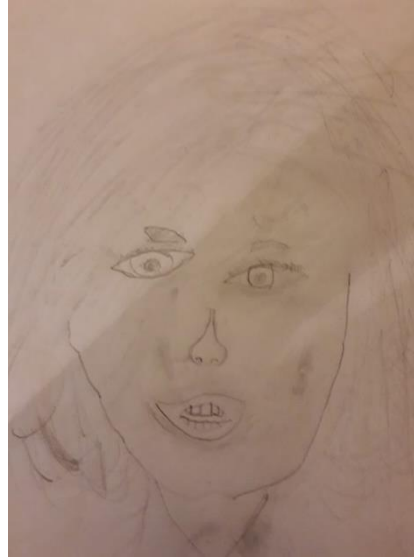
The Aviary: Rico, Michael



Miss Shaw's Newsletter

Just some of this week's learning.

Year 4 Art



Year 2 Science and English

LO: To consider how habitats meet the needs of living things
Are these suitable habitats for these living things? Do they meet their basic needs? Why/why not?

It might be helpful to use the *National Geographic for Kids* animal fact files to help you understand what each creature needs. <https://kids.nationalgeographic.com/animals/>
This site has more information about cacti. <https://www.coolkidfacts.com/cactus-plants/>

Woodland is a suitable / unsuitable (underline answer) habitat for a squirrel because: the squirrel can easily find food and place to hide.

A pond is a suitable / unsuitable (underline answer) habitat for a polar bear because: he needs cold place to live.

A cold desert is a suitable / unsuitable (underline answer) habitat for a lion because: lion lives in the savanna.

A hot desert is a suitable / unsuitable (underline answer) habitat for a cactus because: it can store water inside its stems, roots and leaves.

LO: To consider how habitats meet the needs of living things
Are these suitable habitats for these living things? Do they meet their basic needs? Why/why not?

It might be helpful to use the *National Geographic for Kids* animal fact files to help you understand what each creature needs. <https://kids.nationalgeographic.com/animals/>
This site has more information about cacti. <https://www.coolkidfacts.com/cactus-plants/>

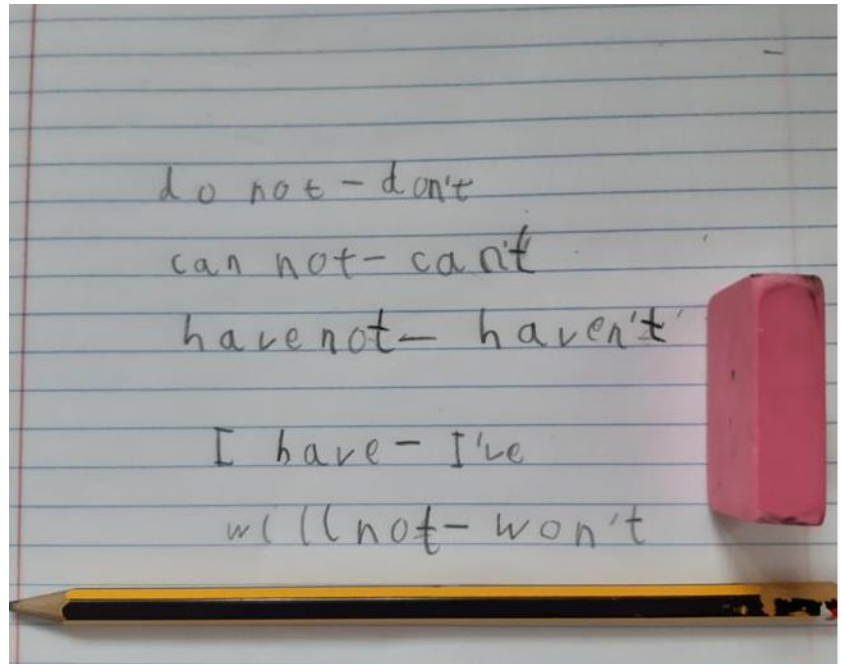
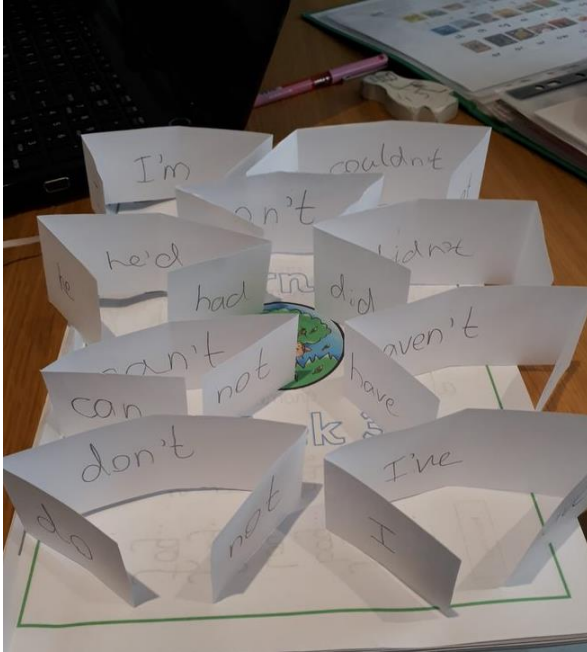
Woodland is a suitable / unsuitable (underline answer) habitat for a squirrel because:
There are a lot of trees to climb to get away from danger.

A pond is a suitable / unsuitable (underline answer) habitat for a polar bear because:
It is too hot.

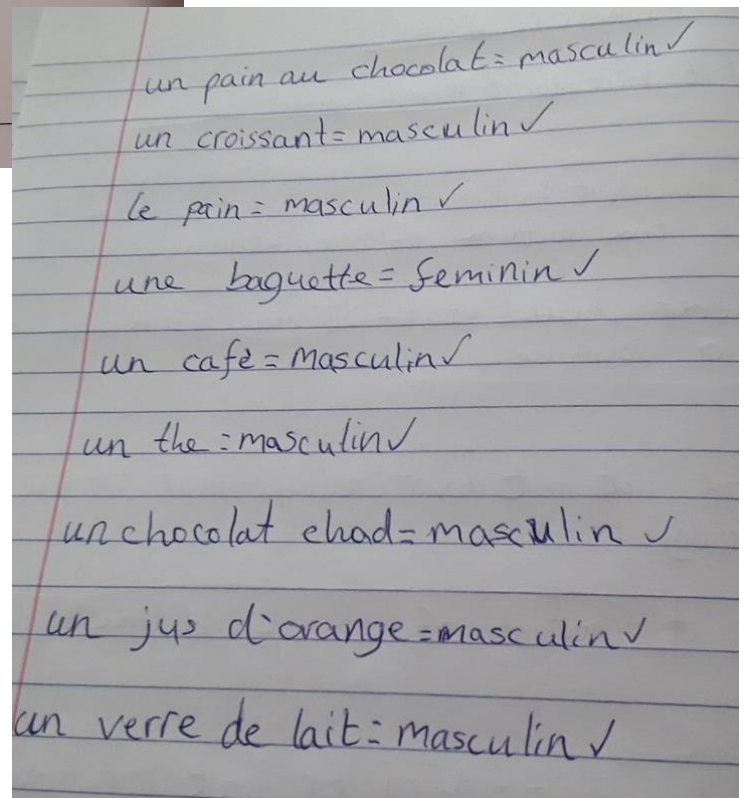
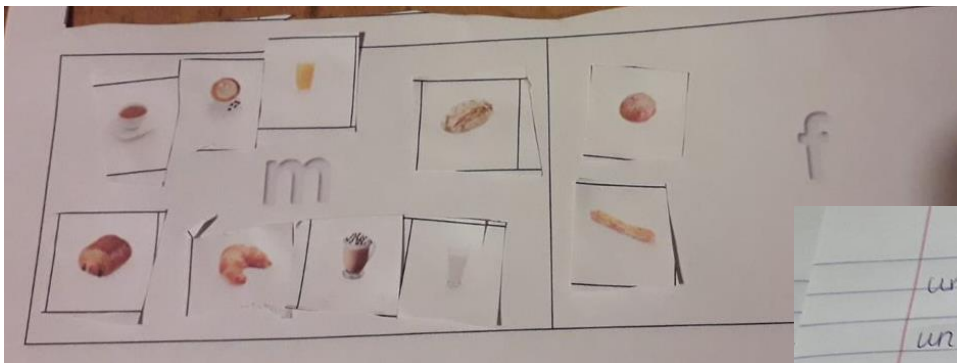
A cold desert is a suitable / unsuitable (underline answer) habitat for a lion because:
It is too cold.



Miss Shaw's Newsletter



Year 6 French





Miss Shaw's Newsletter

Music

BBC Ten Pieces Lesson 1

What do I have to do?

- I will be learning about a piece of music called 'Winter' by Vivaldi.
- I will be making a drawing, poem or story about winter.

How will I be successful?

- Describe what I like/dislike about a piece of music.
- Describe instruments that I see in a video.

Part 1: Watching

Watch the video called 'Violinist Stephanie Childress directs the BBC Scottish Symphony Orchestra to play 'Winter' from Antonio Vivaldi's The Four Seasons' from the following link.

<https://www.bbc.co.uk/teach/ten-pieces/classical-music-ks2-antonio-vivaldi-winter-from-the-four-seasons/zfvgscw>

- On a piece of paper write down what you think of this song. Do you like it? Do you dislike it? I like it.
- What instruments can you see in the video? Are there instruments that you have never seen before? Yes, double bass

- piano
- violin
- double bass

I think this song is sad, cold like a ice-wind

Symbolizes:



- trembling on the ice
- teeth chattering
- drip freezing rain
- freezing your bones
- shivering
- stamping feet to keep warm

Year 3 - music

I like the song ~~because~~ because it's classic and I like classic music and I disliked nothing

Slide →

When it's cold weather I feel a little bit sad but when it warms up I feel much happier!





Miss Shaw's Newsletter

Reception and Year 1 - Art





Miss Shaw's Newsletter

The Aviary – science and art



Rock cakes or moon craters?

